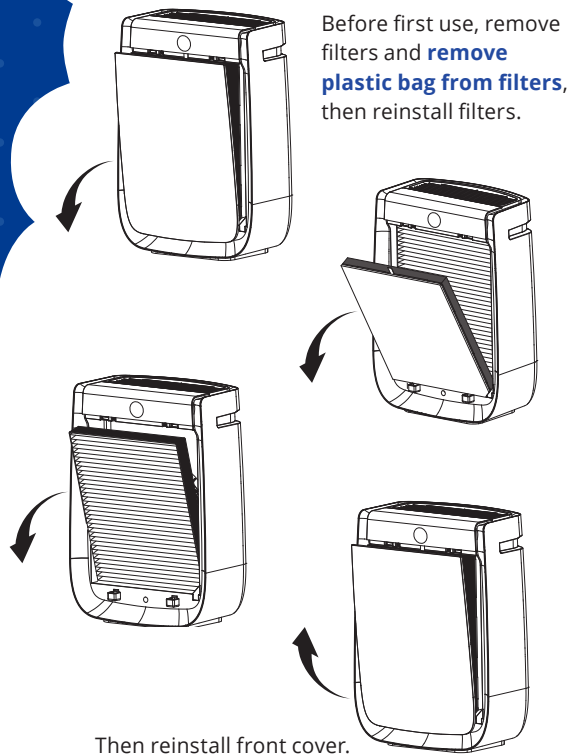


WARNING!

**READ BEFORE
Operating
the AirDoctor
3500i
Air Purifier**



Before first use, remove filters and **remove plastic bag from filters**, then reinstall filters.

Then reinstall front cover.

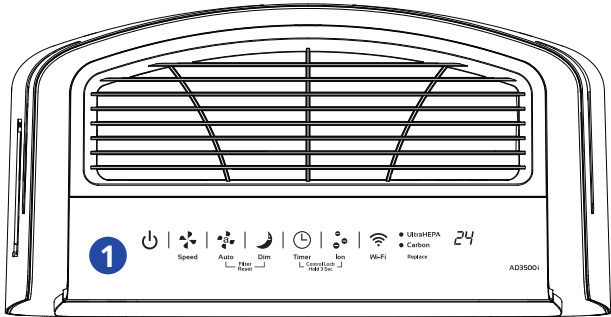
Plug the unit into an electrical outlet. The unit will be ready to run. Read the following directions to select desired settings.

The importance of Genuine AirDoctor Replacement Filters!


Genuine AirDoctor replacement filters are guaranteed by AirDoctor and independently tested to remove dangerous airborne contaminants. Generic (third-party) aftermarket filters are of dubious quality and are not tested for effectiveness and are not certified to work with AirDoctor to maintain the Energy Star and CARB certification. AirDoctor has tested several generic filters that do not even meet the minimum HEPA standard. For air quality you can trust, and to maintain the optimal performance you depend on from AirDoctor, always use genuine AirDoctor replacement filters.

Warning: The use of generic, third-party replacement filters can damage your AirDoctor purifier and void your warranty.

**Control
Panel**



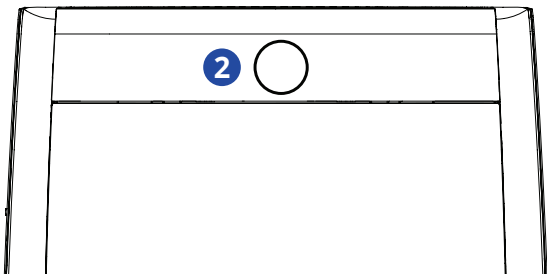
1 Power Control

As soon as you press the power button , the AirDoctor will start in the **Auto** mode. Once the Auto mode has been activated, it will start up in the high-speed mode, then the sensor will start to detect the amount of particulate matter in the air. As the particles are detected, the AirDoctor will automatically adjust to the purification speed (fan speed) that is appropriate to the particulate contamination in the room.

In most cases, we recommend that you leave the AirDoctor in the Auto mode, for other purification modes, see the next page.

**FOR MAXIMUM EFFECTIVENESS,
RUN 24/7 IN AUTO MODE**

**Air Quality
Monitor**



2 Air Quality Monitor

The AirDoctor comes with an Air Quality Monitor that continuously monitors the quality of air in a room. The LED light located on the front will light up, according to the air quality. The Air Quality Monitor is able to show three air quality levels.

BLUE = Good air quality

ORANGE = Moderate air quality

RED = Poor air quality

You can choose to set the AirDoctor to **Auto**. This will enable the AirDoctor to adjust the Fan speed according to the Air Quality. In Auto mode, the fan speed will be adjusted as follows:

Good Air Quality = Low fan speed

Moderate Air Quality = Medium fan speed

Poor Air Quality = High and Boost fan speeds

Please Note: The blue light indicates that AirDoctor is maintaining healthy air quality. We recommend that you keep the unit in Auto mode as it will automatically adjust to the purification needs of the room.