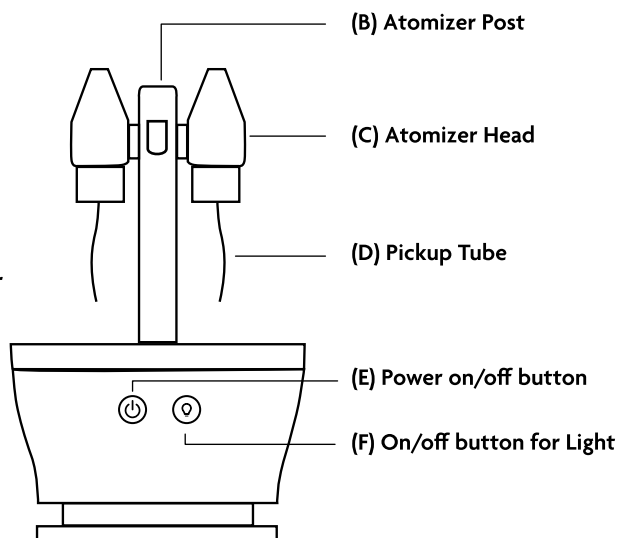
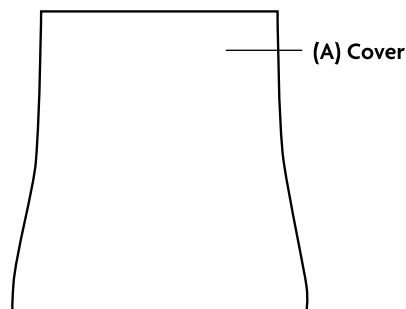
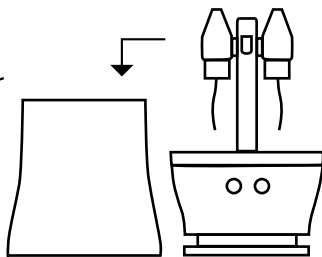


What's in the box

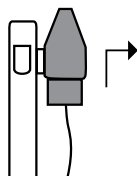


1 Get Started

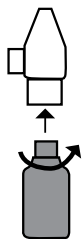
A. Remove Cover



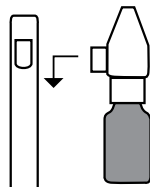
B. Remove Atomizer Head by pulling up and out the atomizer heads



C. Unscrew oil bottle cap, remove clear plug and screw atomizer head onto the bottle



D. Reattach atomizer head to Atomizer Post and push down firmly

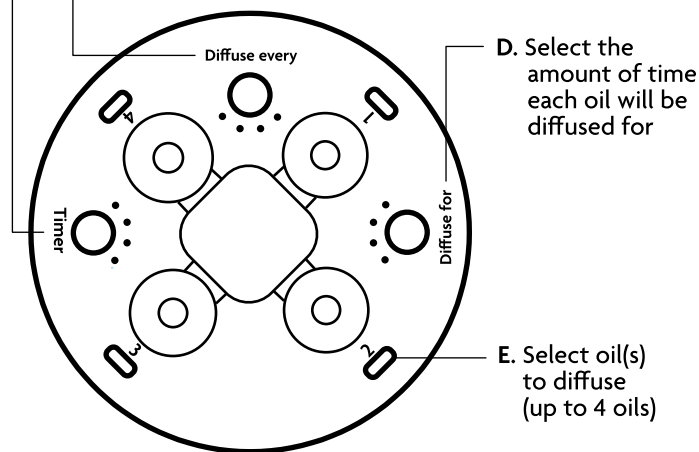


2 Now you are ready to diffuse

A. Turn on your AromaTru

B. Set Timer (total run time per session)

C. Select the amount of time between each cycle of oils being diffused



D. Select the amount of time each oil will be diffused for

E. Select oil(s) to diffuse (up to 4 oils)

3



Download the AromaTru app to unlock additional features



Available for iOS and Android.

4

Your machine is now set up. Enjoy your AromaTru.

If you need more tips, please visit:

