

AQUATru<sup>®</sup>  
BY IDEAL LIVING

AQUATru<sup>®</sup>  
BY IDEAL LIVING

[AquaTru.com](http://AquaTru.com)

UNDER SINK MOUNT  
RO SYSTEM

©2021 AquaTru, LLC. All Rights Reserved. 082621R4

## Table of Contents

<b>Safety Instructions</b>	<b>2</b>
<b>Operating Parameter</b>	<b>2</b>
<b>Before Installation</b>	<b>2</b>
<b>Box Contents</b>	<b>3</b>

## Installation Steps

<b>AquaTru Ultra Reverse Osmosis™ System Installation Steps</b>	<b>4</b>
<b>Tubing Quick Connect Guide</b>	<b>4</b>
<b>Cold Tap Water Adaptor</b>	<b>5</b>
<b>Drain Saddle Installation</b>	<b>7</b>
<b>RO Faucet Installation</b>	<b>9</b>
<b>Installation of TruPure Holding Tank Sanitizer</b>	<b>10</b>
<b>RO System Location and Mounting</b>	<b>11</b>
<b>RO System Water Connection</b>	<b>11</b>
<b>System Start Up</b>	<b>13</b>
<b>System Maintenance</b>	<b>14</b>
<b>Warranty</b>	<b>16</b>
<b>Filter Replacement Records</b>	<b>17</b>

Please read and keep the instructions, before proceeding with the installations.

### Safety Instructions

- Installation needs to comply with state and local laws and regulations.
- System must be installed indoor away from possible environmental damage.
- Do not use with water that is microbiologically unsafe or of unknown quality without adequate disinfection before system.
- Keep the system away from heat sources and direct sunlight.
- This ultra reverse osmosis system contains replaceable treatment components critical for effective reduction of total dissolved solids. The product water shall be tested periodically to verify that system is performing satisfactorily.
- This system is intended to be installed under a sink with access to cold tap water and a waste water drain.

### Operating Parameter

- Daily Production Rate: 54 GPD
- Rated Capacity 360 Gallons
- Operating Pressure: 85 PSI maximum
- Use cold tap water only, 40°-100° F, (4° -37° C)

### Before Installation

#### Inspect the system:

Please take all the components out of the box. Inspect all the parts and connection fittings carefully, make sure that nothing was damaged during shipping. If any part is cracked or broken, please do not proceed with the installation. Contact customer service for assistance.

#### Tools needed for Installation:

- Electric Drill  
Drill bit:
  - 1/4" for the waste water line, 1/8" as pilot, not mandatory
  - 13/16" for the RO water faucet
- Adjustable wrench
- Philips screwdriver
- Utility knife or scissors
- Teflon tape

## Box Contents



**Filter Manifold & 3 Filters**  
(PRE/Carbon Filter, RO Filter & VOC Filter)



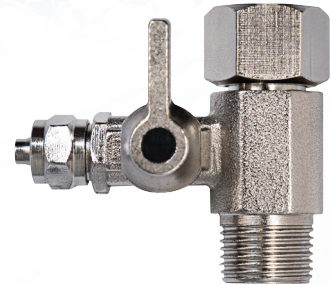
**RO Holding Tank**



**RO Water Faucet**



**Cold Tap Water Adaptor  
1/2" Male & Female**



**Cold Tap Water Adaptor  
3/8" Male & Female**



**Drain Saddle for  
Waster Water  
for 1.5" inch Drain line**



**RO Faucet Quick  
Connect Fitting  
(with clear washer)**



**RO Holding Tank  
Valve**



**TruPure Holding  
Tank Sanitizer  
(with gasket)**



**Filter Manifold  
Installation Hardware**

## AquaTru Ultra Reverse Osmosis™ System Installation Steps

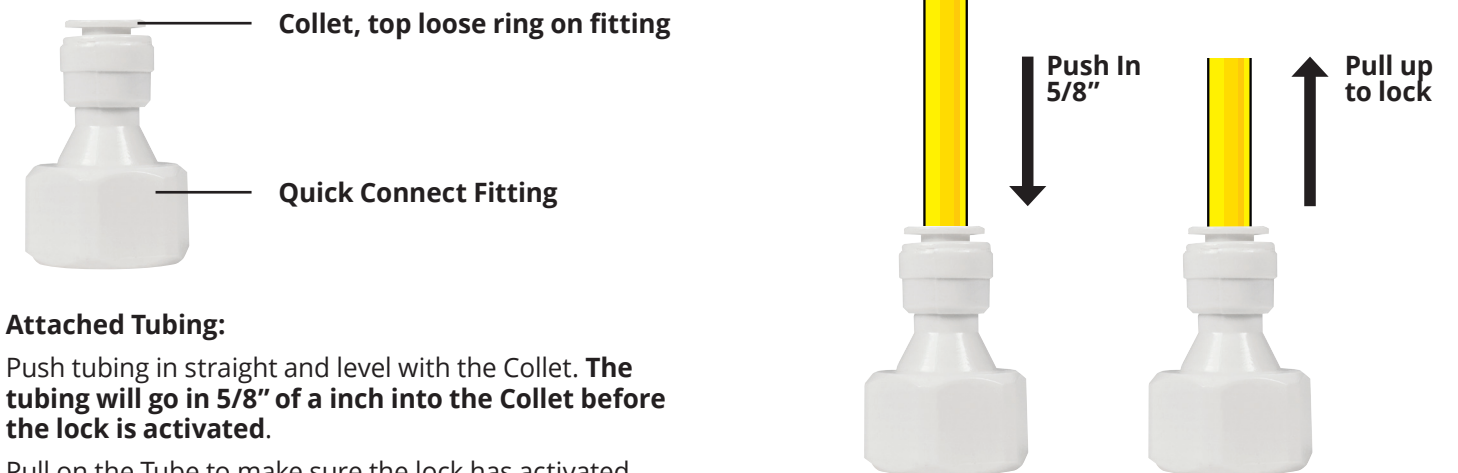
Installation will be a breeze, since most of the parts are already assembled. We will guide you through the rest with the following steps:

1. First we will show you how to use the quick connect fittings
2. Installation of the cold tap water adaptor
3. Installation of the drain saddle for you RO waste water
4. Installation of the RO faucet
5. Installation of TruPure Holding Tank Sanitizer
6. Location and installation of the RO water system
7. Making all of the required water connections
8. System start up
9. System maintenance

**It is important that you follow these steps in the order listed above to minimize any potential installation issues.**

## 1. Tubing Quick Connect Guide

The tube connection in your RO system uses a Quick Connect locking mechanism to lock the tubing in place. Be careful not to damage your tubing when you unpack it. Tubing that is bent at the end or have other damage will not seal and leak water.



### Attached Tubing:

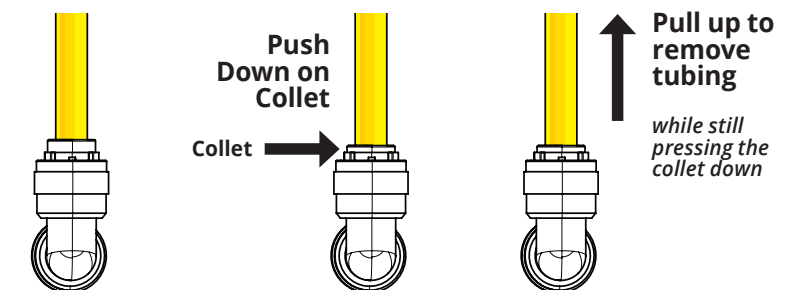
Push tubing in straight and level with the Collet. **The tubing will go in 5/8" of a inch into the Collet before the lock is activated.**

Pull on the Tube to make sure the lock has activated and the tubing is secure.

### Release Tubing:

Push and hold the Collet in to release the lock while pulling out on the tube.

Collet must be held down while pulling up on the tube to release the tube.



## 2. Cold Tap Water Adaptor

**WARNING**

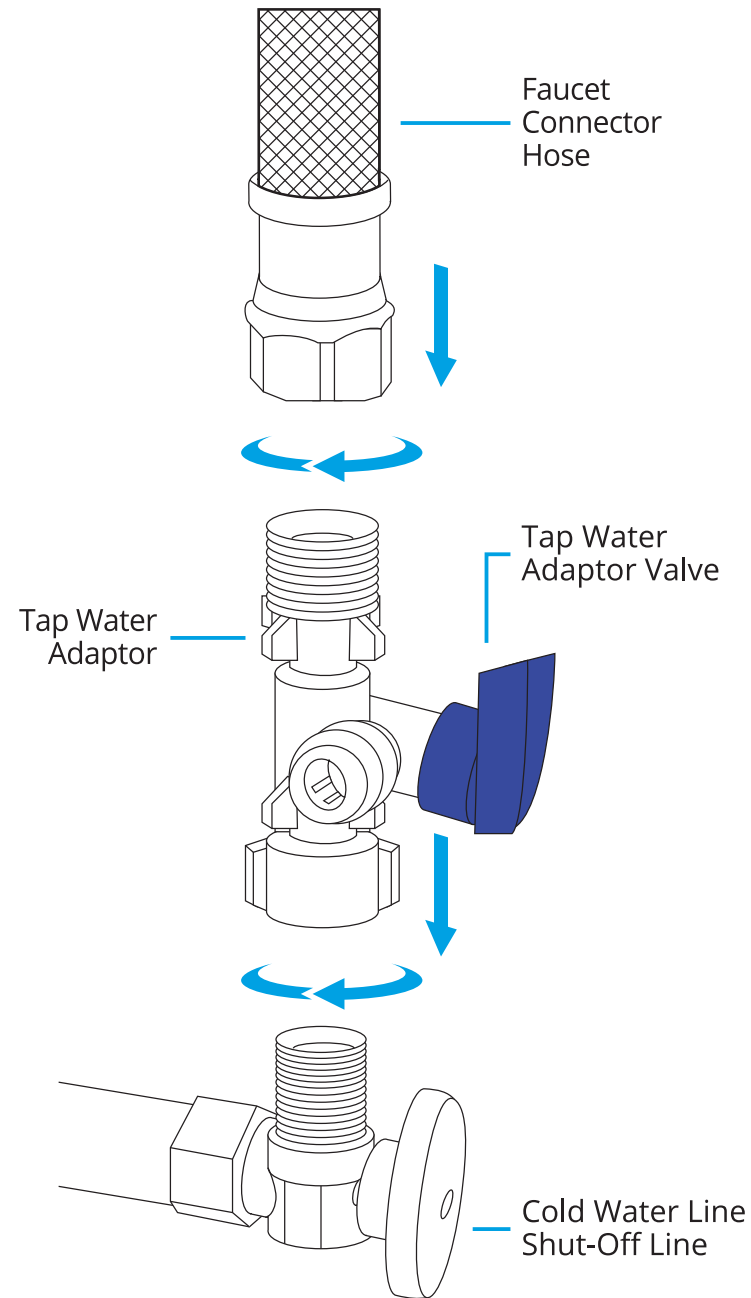
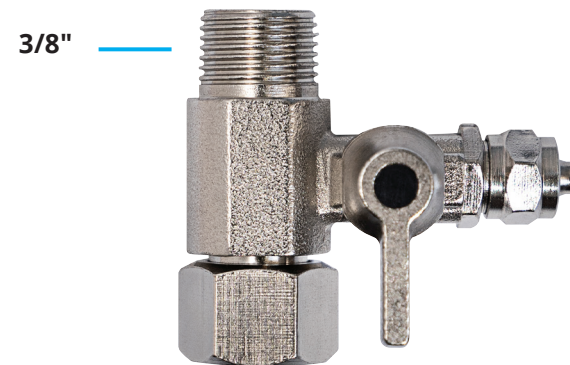
The water supply to the unit must be from the cold water line. Hot water will severely damage your RO system.

Locate the cold water valve underneath the sink and turn it off. Next, open the cold water handle on your sink to release the pressure. Check to make sure the water has stopped flowing before proceeding.

**Note:**

On single handle faucets, the hot water may have to be turned off to prevent hot water cross over during installation. If water continues to come out of the faucet with the cold and hot water valve turned off, the main water supply must be turned off as well.

If the valve does not fit on the cold water shut off valve, a second option is to install the valve on the end of the faucet connector hose that connects with the kitchen faucet.



**Note:** The AquaTru Under Sink Mount system comes with 2 sizes of cold tap water adaptors based on different plumbing needs. You will only use one adaptor for installation.

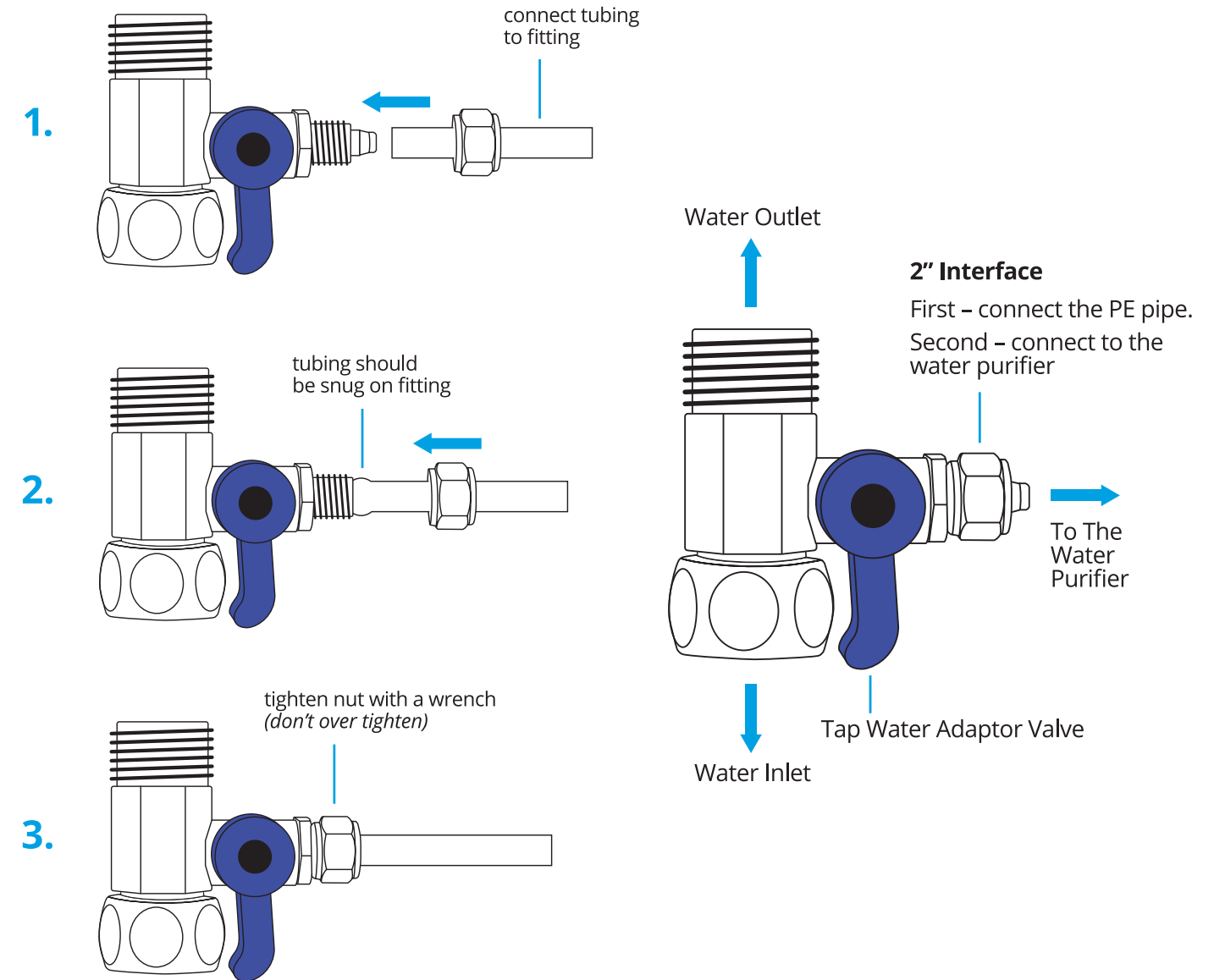
2  
STEP

## 2. Cold Tap Water Adaptor

Before mounting onto the tap water line, connect the white tubing to the end of the adaptor and then install the adaptor. The AquaTru Under Sink Mount system comes with two cold tap water adaptors. Only one will be used depending on the size your plumbing needs. The sizes of the adaptors included are 1/2" and 3/8".

After connecting the white tubing to the cold tap water adaptor, give it a pull to make sure it is secure on the adaptor. Wrap the cold water line shut off valve with **teflon tape** and then wrap the male thread on the Cold Tap water adaptor with **teflon tape**.

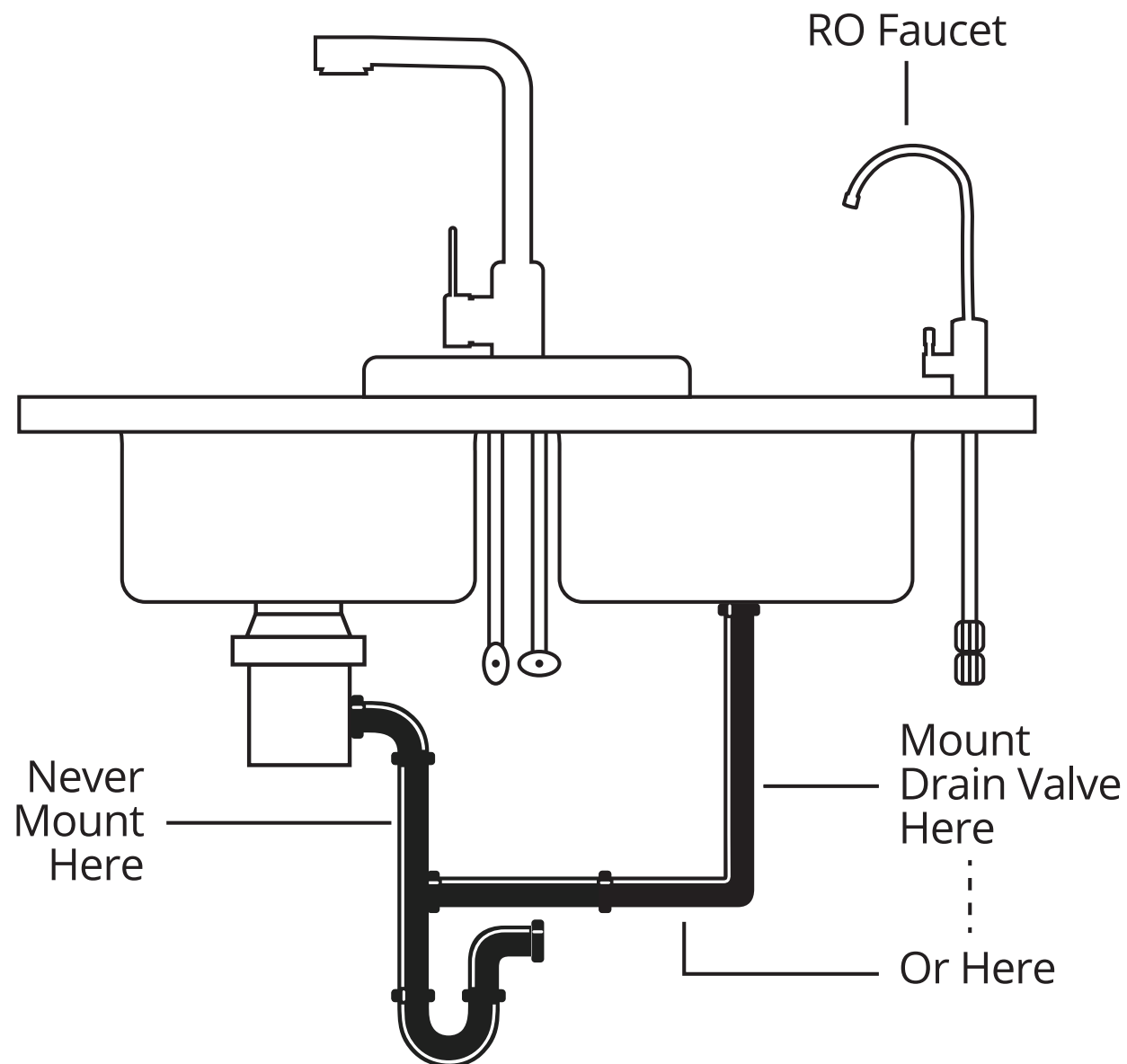
First install the adaptor to the cold water valve, then install the faucet connector hose to the adaptor.



### 3. Drain Saddle Installation

#### Caution

To avoid possible drainage noise, mount drain saddle as low as possible on the vertical tailpiece. The drain saddle assembly should be installed above the trap and on the vertical or horizontal tailpiece.



3  
STEP

### 3. Drain Saddle Installation

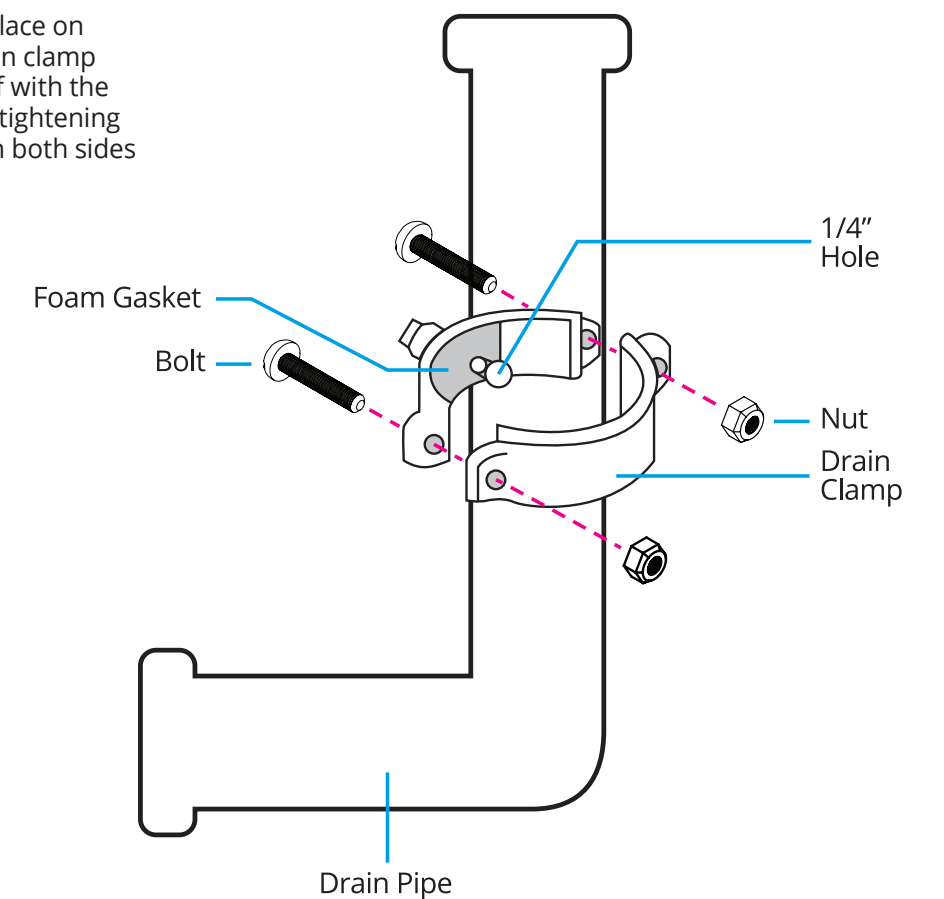
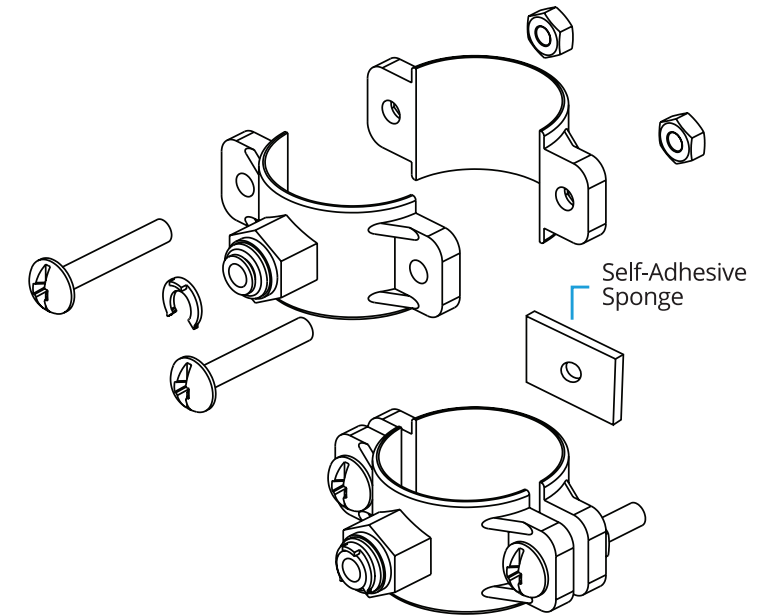
Mark the position of the hole on the drain pipe and drill a 1/4" hole through one side of the drain pipe. There is a piece of self-adhesive sponge provided. Glue this sponge to the inside of the of the saddle; this will cushion any gap between the saddle and the pipe. **Make sure the hole on the sponge is thoroughly punched out, and align it to the hole in the saddle.**

Take the half side of the saddle without the foam and insert a nut into the recess on each side.

Position both halves of the saddle on the drain pipe with the saddle's opening aligned over the drilled hole. The foam gasket will be between the drain saddle and the drilled hole.

**Tip:** To ensure the hole on the drain saddle is aligned with the hole in the drain pipe, insert the drill bit into the drain saddle and use the drill bit to align the two holes as you assemble the drain saddle onto the drain pipe.

Secure the drain clamp halves together in place on the drain pipe. Screw bolts through the drain clamp half with the foam gasket and the other half with the 2 nuts installed. Do not over tighten. When tightening the bolts, make sure there is equal space on both sides between the drain saddles.



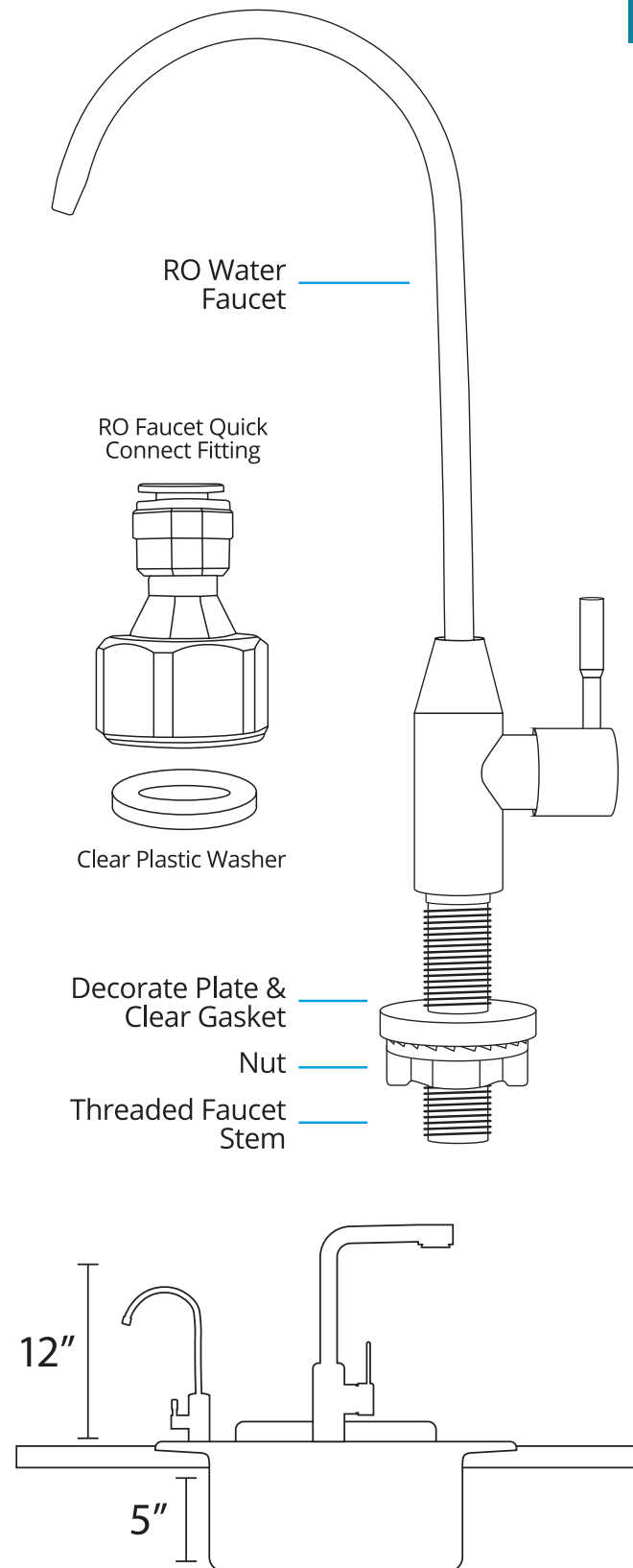
## 4. RO Faucet Installation

The RO faucet may be installed on any flat surface. Check the underside of your install location for interference by making sure that drilling a hole will not damage any pipes or wiring underneath the countertop of sink. Check to be sure there is enough room for the threaded faucet stem and nut.

**Note:** For drilling, you must use an appropriate drill bit and drilling method for the material of your sink and or countertop. Different drill bits are required for stainless steel, porcelain, marble, etc.

You may use an existing hole in your counter or sink or drill a new hole (**if using an existing hole begin at step 2**). Make sure the faucet decoration plate and nut plate is big enough to cover the hole you use.

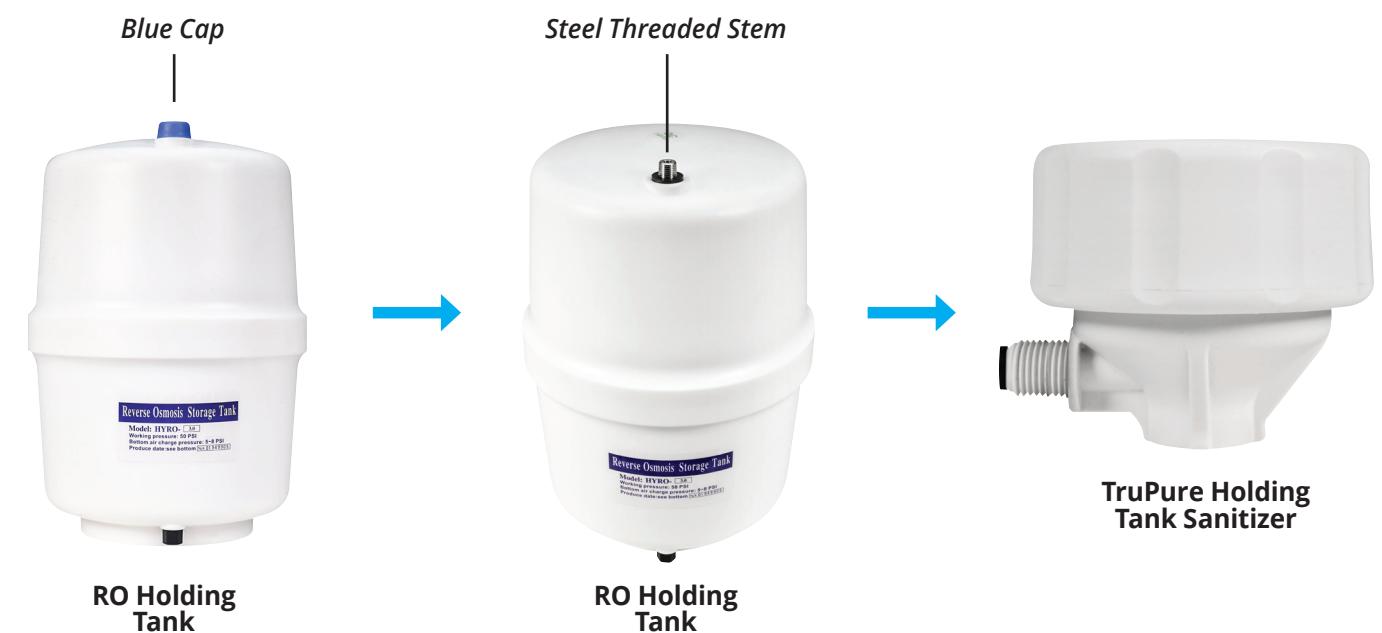
1. Drill a **13/16"** hole using a appropriate drill bit and drilling method for the material.
2. Remove the plastic nut from the threaded faucet stem.
3. Insert the threaded faucet stem though the newly or preexisting hole, making sure the decorative plates with the clear gasket stays on the threaded stem and that it completely covers the hole when installed.
4. Under the sink, install the plastic nut on the threaded faucet stem, making sure the gasket that comes with the fitting is seated inside the fitting. Hand tighten it. Make sure the faucet does not move and the top decorate plate covers the hole.
5. Install the RO Faucet quick connect fitting to the threaded stem. First, wrap teflon tap around the thread. Make sure the clear washer is fully seated inside the quick connect fitting. Screw the fitting onto the threaded stem. Hand tighten with an adjustable wrench. **Do not overtighten.**



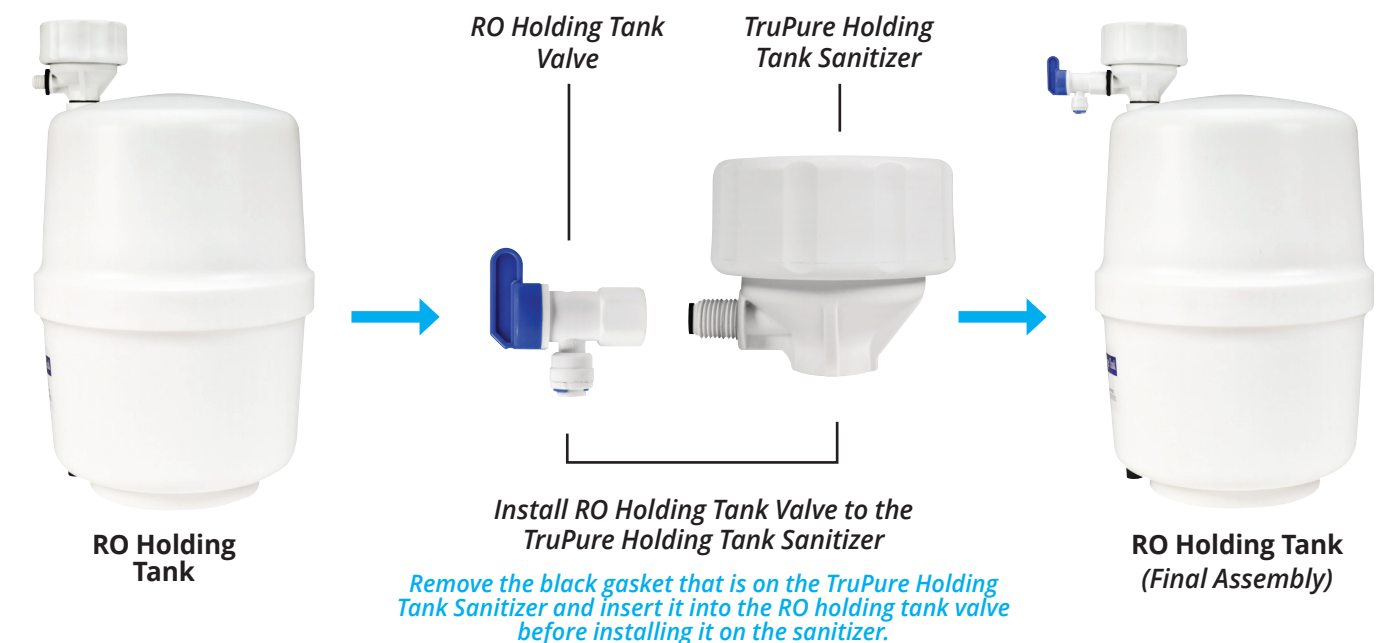
4  
STEP

## 5. Installation of TruPure Holding Tank Sanitizer

1. Unscrew the blue cap from the RO holding tank.
2. Wrap the teflon on the stainless steel threaded stem on the RO holding tank.
3. Screw the TruPure Holding Tank Sanitizer onto the holding tank, hand tighten.
4. There is a black gasket inside the TruPure Holding Tank Sanitizer. Insert this gasket inside the holding tank valve.
5. Wrap teflon on the male thread on the TruPure Holding Tank Sanitizer and screw the RO holding tank valve onto the TruPure Holding Tank Sanitizer threaded stem, hand tighten.



5  
STEP



## 6. RO System Location and Mounting

6  
STEP

Install the three filters into the filter manifold in accordance to the filter color code. Locate the area under your sink where you want to install the RO system, (RO manifold with filters and RO holding tank).

**Note:** The filter manifold can be mounted on a cabinet wall.

**Helpful Hint:** Write the date of filter installation with a permanent marker on the filter body, so you can easily identify when to replace the filters.

The **Pre-filter** should be replaced every **6 months**

The **VOC filter** is replaced every **12 months**

The **RO filter** is replaced every **24 months**

The **VOC Carbon with PH+ Mineral Boost filter** is replaced every **12 months**

### Caution





Before mounting the filter manifold on a cabinet wall, make sure that the cabinet wall can handle the weight of the filters and manifold and the wall is thick enough to handle the mounting screws. If the mounting screws are too long, we recommend that you buy shorter screws at your local hardware store.

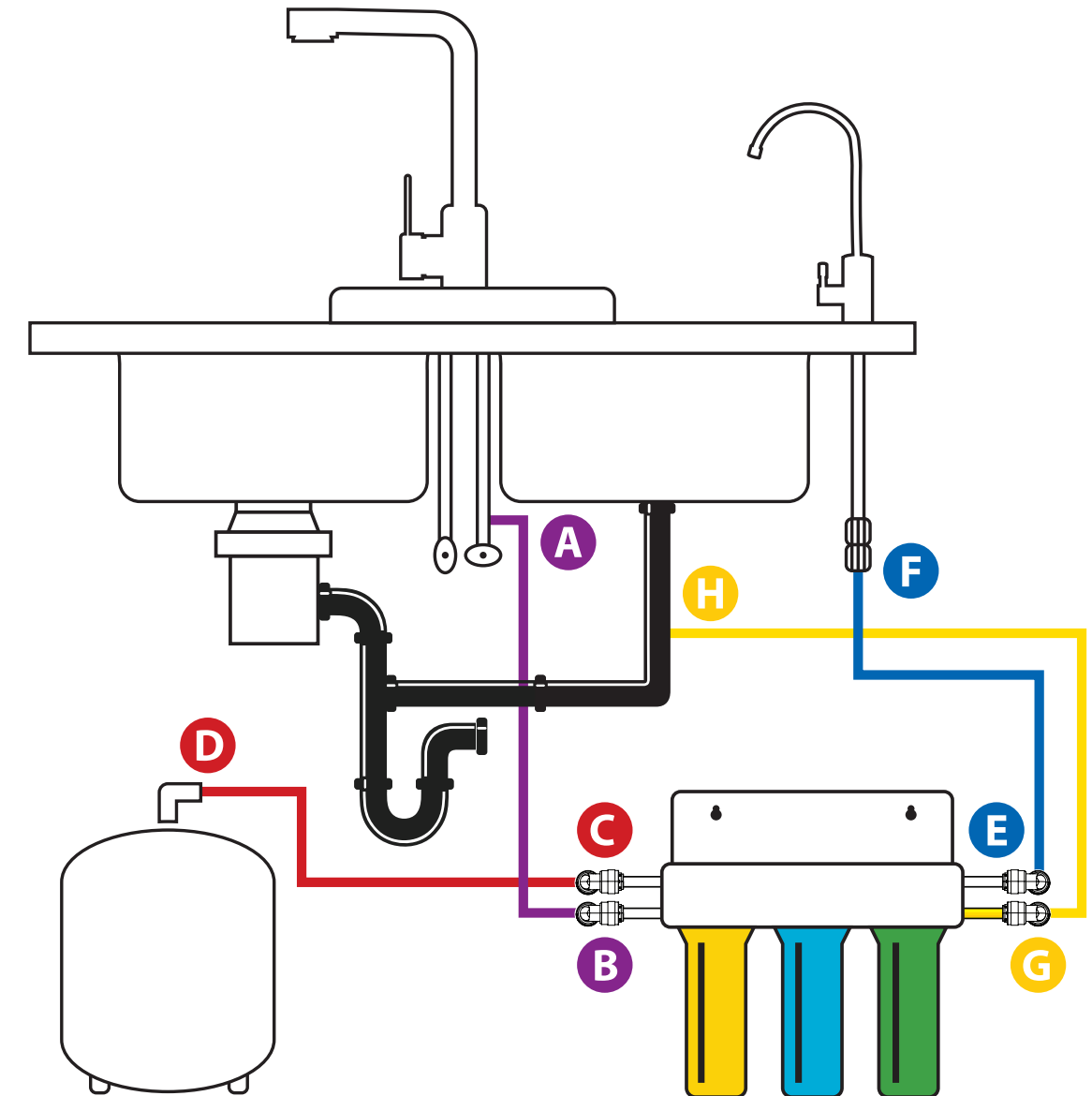
## 7. RO System Water Connection





7  
STEP

After you have located the optimal location for your filters and RO holding tank, you will need to cut the 1/4" tubing to the correct length using the diagram below. Cut the tubing using a sharp utility knife. Make sure to not bend or damage the tubing.

### Connection Point:

- 
**A to B**  
 Connect the white tubing from the tap water adaptor valve point **A** then to the quick connect fitting marked **B** - marked "**Cold Supply**" on the filter Manifold.
- 
**C to D**  
 Connect the white tubing to the quick connect fitting **C** - marked "**Holding Tank**" on the filter manifold, then connect the other end to the holding tank valve **D**.
- 
**E to F**  
 Connect the white tube to the quick connect fitting **E** - marked "**Water Faucet**", then connect the other end to the RO Faucet quick connect fitting **F**.
- 
**G to H**  
 Connect the yellow tube to the quick connect fitting marked "**Drain**" - **G** connect the other end to the drain saddle valve **H**.



-  Cold Water Supply
-  Holding Tank
-  RO Water Faucet
-  Drain

### 8. System Start Up

8  
STEP

**Turn on the tap water:**

Slowly turn on your cold water supply, then open the tap water adaptor valve, (turn counter clockwise) to allow untreated water to enter the system.

#### CHECK FOR LEAKS!

**Open RO holding tank valve:**

Open the tank's ball valve to allow water to enter the tank. **The tank's valve is "ON" when the valve handle is parallel (in the same direction) with valve outlet.**

#### CHECK FOR LEAKS!

**Wait for the tank to fill:**

Before usage, fill the RO holding tank and empty it completely two times. Allow 2 to 3 hours for the tank to fill. When the tank is filled, the RO system will shut off automatically.

**CAUTION:**

**When the unit is first filled with water, some tiny black particles are flushed out of the carbon filter. It's important that you fill the RO holding tank and empty it out 2 times before consuming the water.**

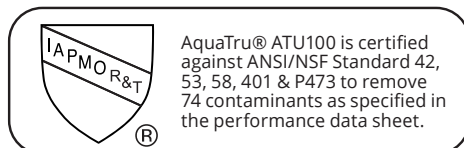
**Drain Tank:**

Open the RO faucet to drain the tank. Let the tank drain completely before closing the lever.

#### CHECK FOR LEAKS!

**Make sure there is no leaking at the joint, fitting, valve and tubing connections.**

### END OF INSTALLATION



### 9. System Maintenance

9  
STEP

**Filter Change:**

The RO system contains 3 filters that must be replaced at a regular intervals to maintain performance. **Use only genuine AquaTru Filters.** The three filters are:

- **Pre-filter (AT2001)** should be replaced every 6 months or every 600 gallons, whichever comes first.
- **VOC filter (ATU2003)** is replaced every 12 months or every 360 gallons, whichever comes first.  
*When replacing this filter we recommend that you also sanitize the holding tank, See Sanitize RO holding tank before proceeding.*
- **RO filter (AT2002)** is replaced every 24 months or every 1200 gallons, whichever comes first.  
*When replacing this filter we recommend that you also sanitize the holding tank. See Sanitize RO holding tank before proceeding.*
- **VOC Carbon with PH+ Mineral Boost filter (AT2004)** is replaced every 12 months or 600 gallons, whichever comes first.

---

**Sources of supply for replacement components:** [AquaTru.com](http://AquaTru.com)

---

**Tips before you start:**

1. Ensure the service area is free of any excess dirt or dust in order to not cross contaminate parts.
2. Wash hands with soap and water and/or wear sanitary gloves.

**Filter change procedure**

1. Turn off the Cold water supply line
2. Empty the RO holding tank by opening the RO water faucet.
3. Remove the filter to be replaced

**Helpful Hint:** *The filter can pivot out of the base to make it easier to unscrew.*

4. Install the new filter, making sure that the filter is fully installed.

**Helpful Hint:** *Write the date of filter installation with a permanent marker on the filter body, so you can easily identify when to replace the filters.*

5. Close the RO water faucet.
6. Open the cold tap water supply line.

#### CHECK FOR LEAKS!

7. After the RO holding tank has been filled fully, empty the tank to flush out the filter before consuming.
8. Refill the RO holding tank.



## 9. System Maintenance

### Sanitize RO holding tank:

The RO system should be sanitized once a year. We recommend that you do the sanitizing process each time you replace the VOC filter, every 12 months. You should complete the sanitizing process **before** you replace the VOC filter. Please do the following.

**For best results** – We recommend that you use 2 tablespoons of household bleach. To ensure that the tanks get sterilized, check that the bleach hasn't expired. If the bleach is expired, buy new bleach.

### Tips before you start:

1. Make sure you have sanitizing solution and a new VOC filter.
2. Ensure the surface area is free of any excess dirt or dust in order to not cross contaminate parts.
3. Wash hands with soap and water and/or wear sanitary gloves.

### Sanitation Steps:

1. Turn off the Cold water supply line to the RO system.
2. Open the RO water faucet and drain the water out of the RO holding tank. Before proceeding, make sure that the tank is completely empty.
3. Unscrew the top cap of the TruPure Holding Tank Sanitizer. Note that if the tank is not completely empty, the RO holding tank and sanitizer is pressurized and will spray water when opened.
4. Pour 2 tablespoons of bleach into the TruPure Holding Tank Sanitizer. If there is too much water in the sanitizer to add bleach, pour the water out before adding the bleach.
5. Reconnect the top cap on the TruPure Holding Tank Sanitizer, make sure that is on tight.
6. Turn off the RO water faucet.
7. Turn on the cold water supply line for the system to fill the RO system.

## CHECK FOR LEAKS!

8. Allow 2 hours for the RO holding tank to completely fill.
9. Empty the RO holding tank by opening the RO water faucet.
10. Refill the RO holding tank again and close the cold water supply line.
11. Empty the RO holding tank.
12. Replace the VOC filter and other filters as needed.

**Helpful Hint:** *Write the date on the filter you have replaced so you can remember when they need to be replaced again.*

13. After replacing a filter, run two full tanks of water through the filter and drain the water out before consuming the water.

## CHECK FOR LEAKS!

## One Year Limited Warranty

Your AquaTru water purifier is warranted to be free from defects in materials and workmanship for one year from the original purchase date. Should the product have a defect in materials or workmanship, we will repair or replace it without charge to you (a shipping and processing fee will apply). **Warranty does not include filters.** To obtain service under warranty, simply call our customer service center toll-free at **800.220.6570**.

This warranty does not cover filters, damage caused by accident, misuse or any use other than as intended and described in this product manual, or damage resulting from failure to maintain and clean this product as also specified in this product manual. This warranty applies only to the original purchaser of the AquaTru water purifier.

**ALL EXPRESS AND IMPLIED WARRANTIES FOR THIS PRODUCT, INCLUDING IMPLIED WARRANTIES OF MERCHANTABILITY AND FITNESS FOR A PARTICULAR PURPOSE, ARE LIMITED IN DURATION TO THE WARRANTY PERIOD, AND NO WARRANTIES, WHETHER EXPRESS OR IMPLIED, WILL APPLY AFTER THIS PERIOD.**

Some states do not allow limitations on the duration of implied warranties, so the above limitation may not apply to you. While this warranty gives you specific legal rights, you may also have other rights which may vary from state to state.

### Contact Info for Warranty Service:

AquaTru®, LLC

1392 Sarah Place, Ste. B | Ontario, CA | 91761  
1.800.220.6570 | aquatru.com

©2021 AquaTru®, LLC. All Rights Reserved.  
Patents 9,422,173, D731,025.

